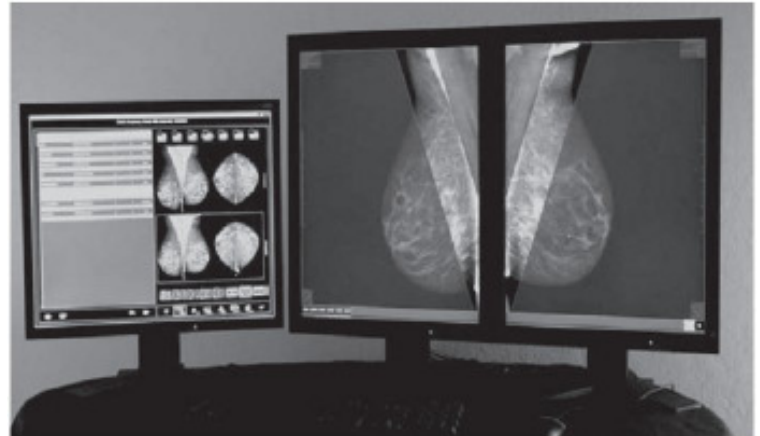




“A distinctly different style of enterprise integration and interpretation workflow. We understand the data-intensive challenges that radiologists are facing when moving to digital mammography, and the need to review digital mammograms as efficiently as they can read films on motorized light boxes. Our elegant and simple interface is designed to meet the most demanding radiologist’s needs.”



## User Advantages

- “Single-click” workflow to streamline mammogram reading from opening a study to generating a report.
- Customized mammographic-specific reading and hanging protocol sequences (including multiple prior support)
- Incorporates expert viewing methodology including Tabár’s systematic viewing mask techniques for searching for subtle radiographic abnormalities.
- 8 or more current and prior images are displayed immediately when the next study is opened, with multiple priors accessible by single click.
- Current images are high-lighted in all hanging protocols to minimize the risk of misdiagnosis from priors.
- Full-resolution image viewing navigated using a mouse wheel; visual tracing of pixels that have been viewed - no need to manually pan and zoom the images to view all pixels at full resolution.

*Streamline your image viewing and workflow.*

800.736.2738



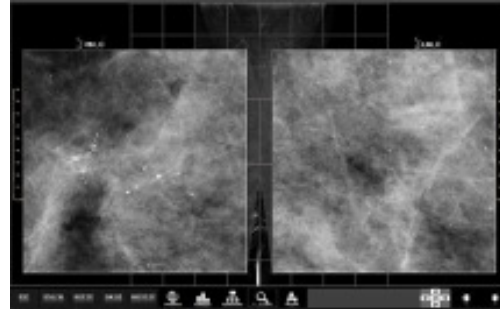
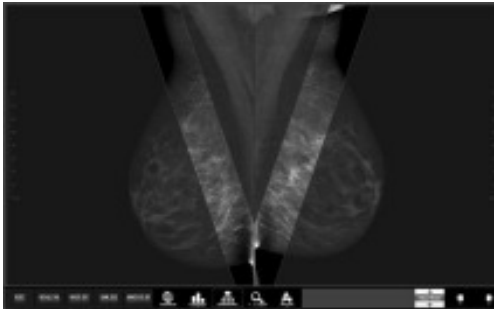
**NOVARAD SOUTH™**  
RIS | PACS FOR LIFE

*Radiology Integration and Management Specialists*



## User Advantages (continued)

- Electronic grease pen allows the radiologist to markup the image display any time; and automatically generate corresponding mammography recall form and/or screening report. Markup can be optionally exported to PACS.
- Range of modalities – FFDM, CR, digitized films, DX, US, MR, CT, NM; integrated CAD and GSPS display.
- Tomosynthesis image display included in the workflow.
- Optional plug-in viewers for additional capabilities such as breast MR CAD, ultrasound CAD, web document review, dictation triggers, etc.
- Mammography film printing - including 10 and 12 bit grey-scale, true size, chest-wall alignment, annotation positioning, as required to meet the MQSA guidelines.
- Efficient reading due to bi-directional reporting system integration - reading can be driven by an external work-list, and markup and assessment results from the reading are transparently propagated back into the reporting system where they are included in the generated report.



## Other Features...

- Follows industry standards, compatible with IHE Mammo guidelines.
- Images and related information (such as mammo CAD structured reports and markup defined in GSPS objects) can be pushed to the workstation, or can be retrieved from PACS.
- Two levels of pre-fetch – optimistic storage to local disk based on an expected worklist, plus caching to memory during the reading cycle using the interpretation work-list.
- Even with no user logged in, the system automatically pre-fetches studies.
- Application honors the security settings of the enterprise – so can work within the policies that an enterprise implements as part of its HIPAA compliance.
- Plug-in mechanism integrates the display of reports from an external RIS, and supports the trigger of an external dictation system with the identity of the study being read.
- Peer-to-peer worklist synchronization without the need for a server (reading states on multiple workstations can be automatically synchronized)

800.736.2738



**NOVARAD SOUTH**  
RIS | PACS FOR LIFE